

2018 – v1

**ABERDEEN CONCRETE
SHIPBUILDING CO., LTD.,
TORRY, ABERDEEN,
1918 TO 1920.**



STANLEY BRUCE

Aberdeen Concrete Shipbuilding Co., Ltd., Torry, Aberdeen (1918 to 1920).

SUPPLEMENT No. 1

Cretetree (1919).

The following photographs were provided by Kenneth MacLennan, and he took them on the Isle of Scalpay, near Ardinashaig, Harris, Western Isles, Scotland in September 2018.

Photo (1) - donkey boiler used to provide steam for the steering gear and windlass. It is split in two as if it had blown apart.

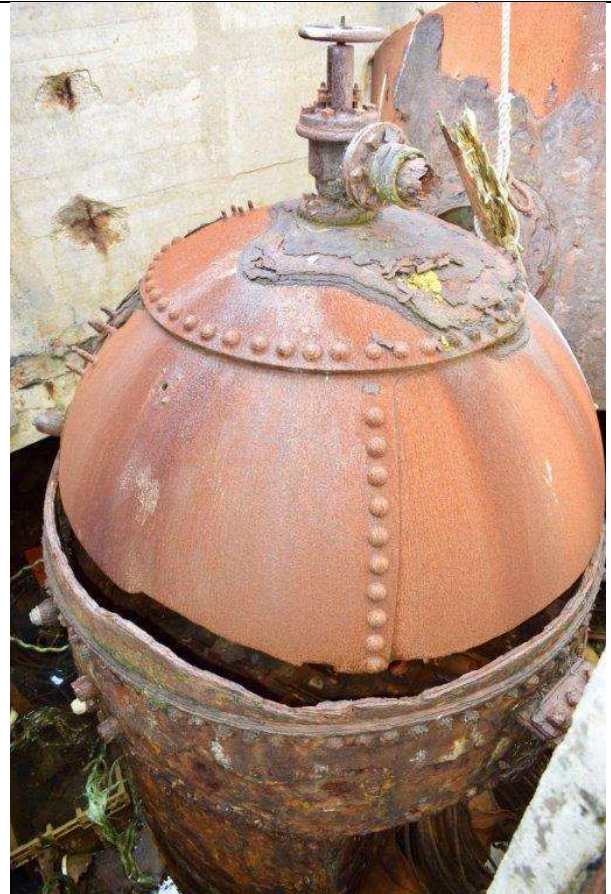
Photo (2) – gangway over to the vessel acting as a quay for the local fishermen.

Photo (3) - REG TONS 660 is the Net Tonnage.

Photo (4) – Stern with name and port of registration.

Photo (5) – hold of the Cretetree full of water, so it's obvious that she has a hole in her hull.

Photo (6) – bow of the vessel with her name incised on her bow, and steel reinforcement around her hawsepipe.



*(1) Donkey Boiler.
(Photo, Kenneth MacLennan).*



(2) Cretetree, used as a jetty. (Photo, Kenneth MacLennan).



*(3) Hatch Coaming – ‘REG TONS 660 58/100, and OFF No 143085’.
(Photo, Kenneth MacLennan).*



(4) Cretetree stern, ‘CRETETREE LONDON’. (Photo, Kenneth MacLennan).



(5) Cretetree hold, full of water. (Photo, Kenneth MacLennan).



(6) Bow of the Cretetree. Note the name and the steel reinforcement around the anchor hawsepipe.

(Photo, Kenneth MacLennan).